

FR**LING ENERGY**

Specialists in:

BIOMASS FUEL PRODUCTION



Precision

Screened



No bigger than a Match Book

Dry

To 25% Moisture Content

Wood

Chips

Bole Wood

Not much bark.

In Mid to Large Biomass Boilers

Like the
Froling T4-150



500,000 BTU/hr Net Output

The Viessmann Vitoflex 300 RF



512,000 to 1.8 Million BTU/hr Net Output

And the **Viessmann Vitoflex 300 UF**



512,000 to 1.8 Million BTU/hr Net Output

PDCs

Made
Locally



PDCs

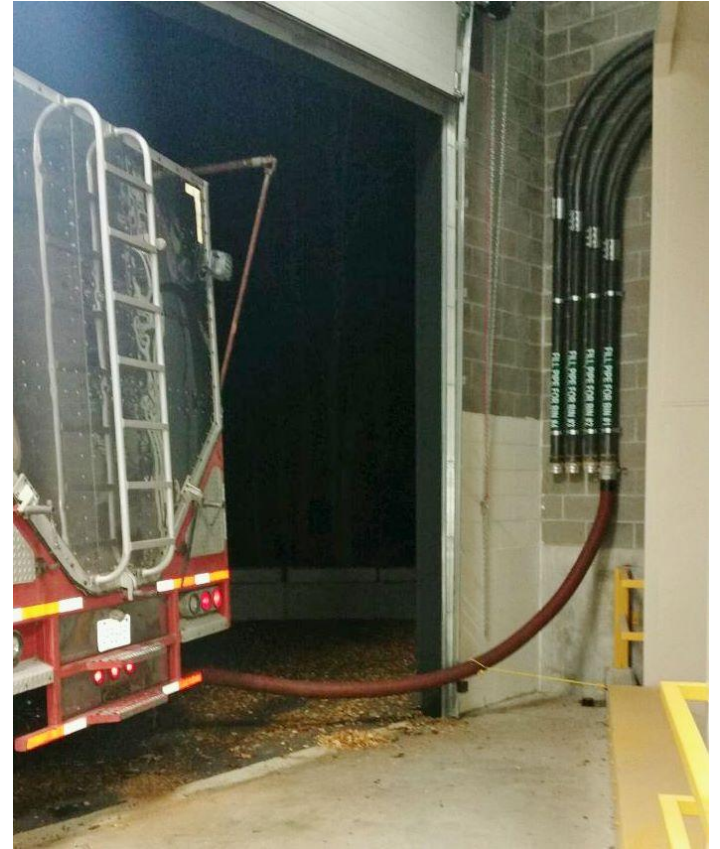
Delivered
Locally



PDCs

are *BLOWN* into
storage bins

(just like Pellets)



PDCs



Net Cost is

35% Less than Pellets



PDCs

Are a Refined product
with Consistent Quality



A sweeper arm bin with auger channel



directly feeds the boiler

	Heating Oil	Dry Wood Chips Retail	Green Chips Retail Blended Bole Wood	Green Chips Wholesale Blended Bole Wood	Boiler Plant Capital Variation
2010	\$2.00		\$58.00	\$35.00	0%
2011	\$2.80		\$55.00	\$35.00	10%
2012	\$3.30		\$55.00	\$35.00	10%
2013	\$3.40		\$55.00	\$35.00	10%
2014	\$3.20		\$55.00	\$35.00	0%
2015	\$2.60	\$105.00	\$55.00	\$36.00	0%
2016	\$1.60	\$110.00	\$55.00	\$36.00	0%
2017	\$2.20	\$120.00	\$56.00	\$37.00	0%
2018	\$2.60	\$120.00	\$58.00	\$36.00	0%
2019	\$2.60	\$125.00	\$58.00	\$37.00	0%
2020	\$2.10	\$125.00	\$60.00	\$37.00	10%
2021	\$2.90	\$135.00	\$60.00	\$38.00	15%
2022	\$4.50	\$150.00	\$68.00	\$38.00	25%
Capital Cost Influences		Supply and Demand	Steel and Energy Prices	Labor Rates	